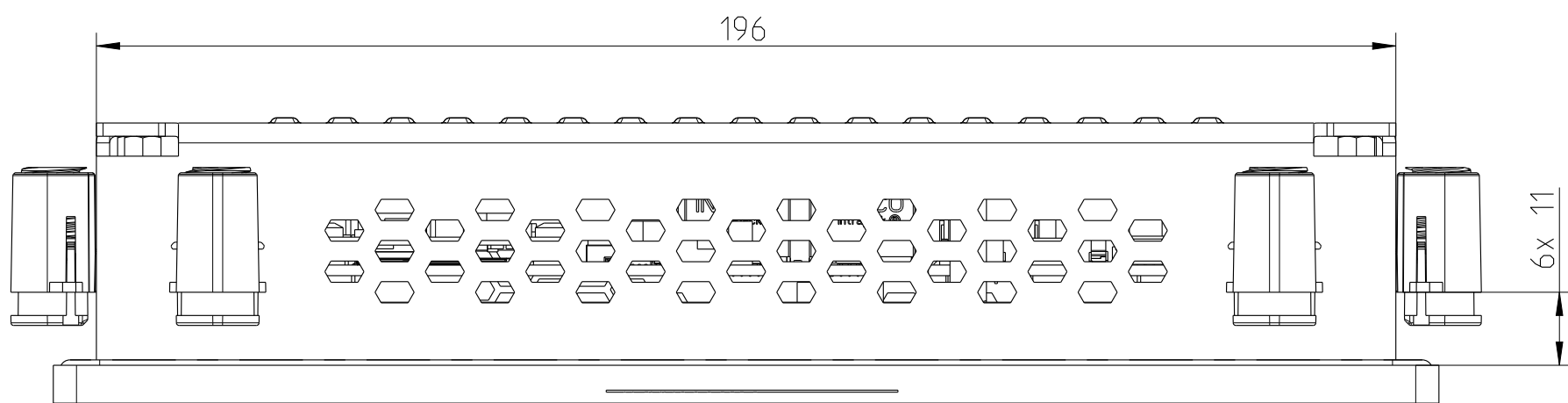
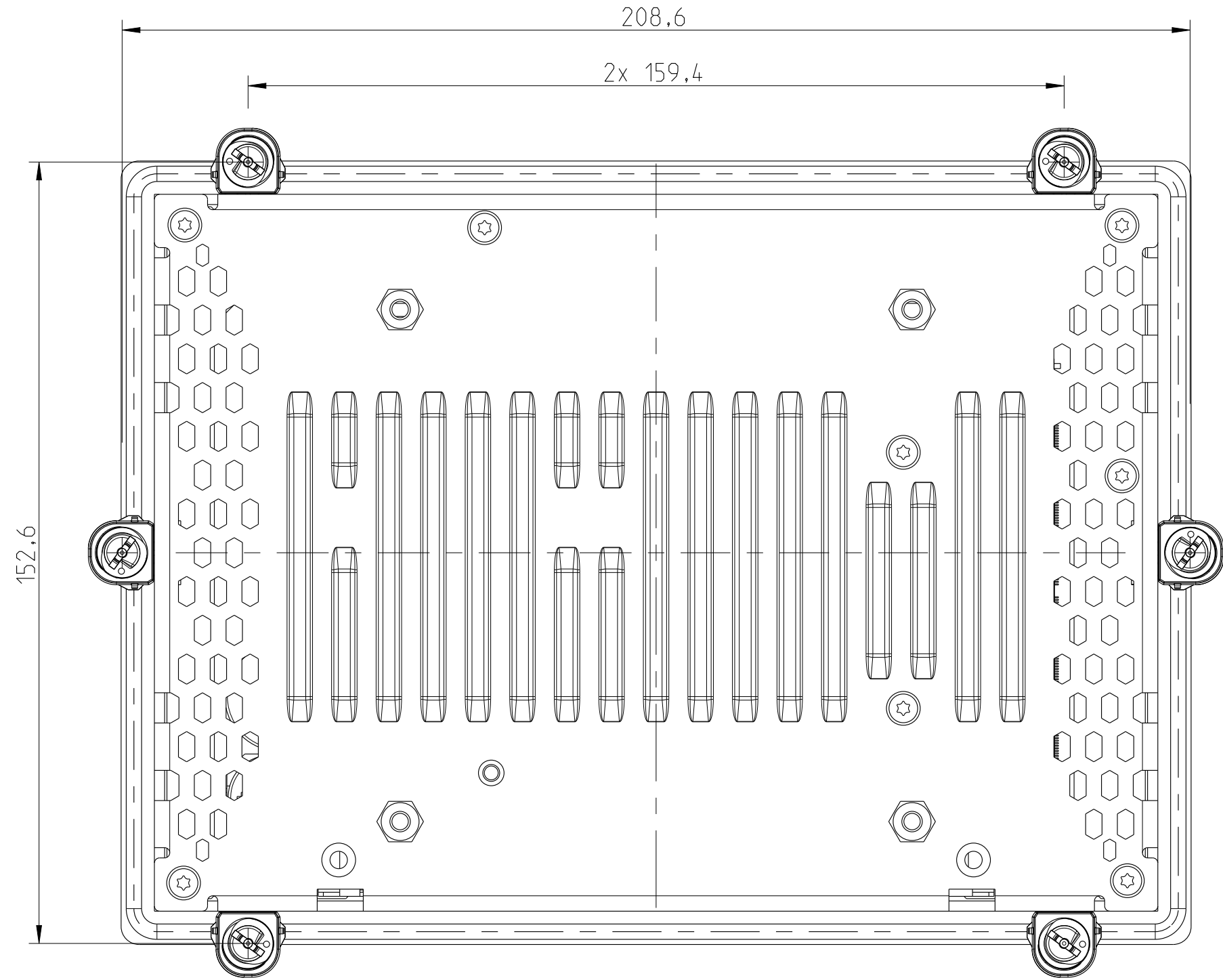
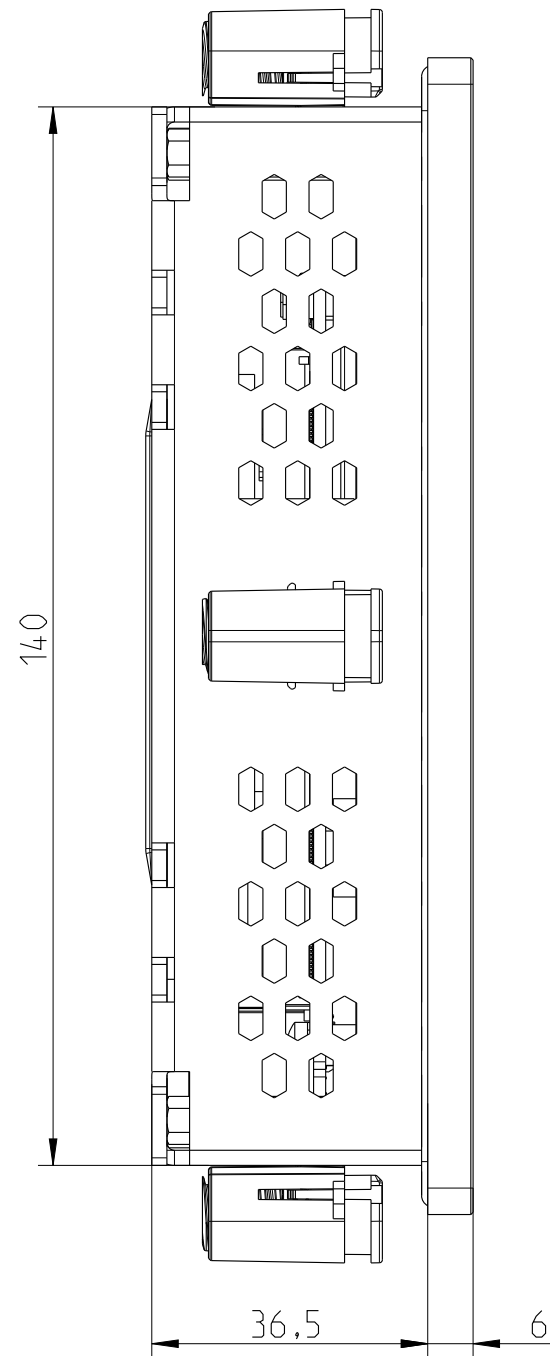
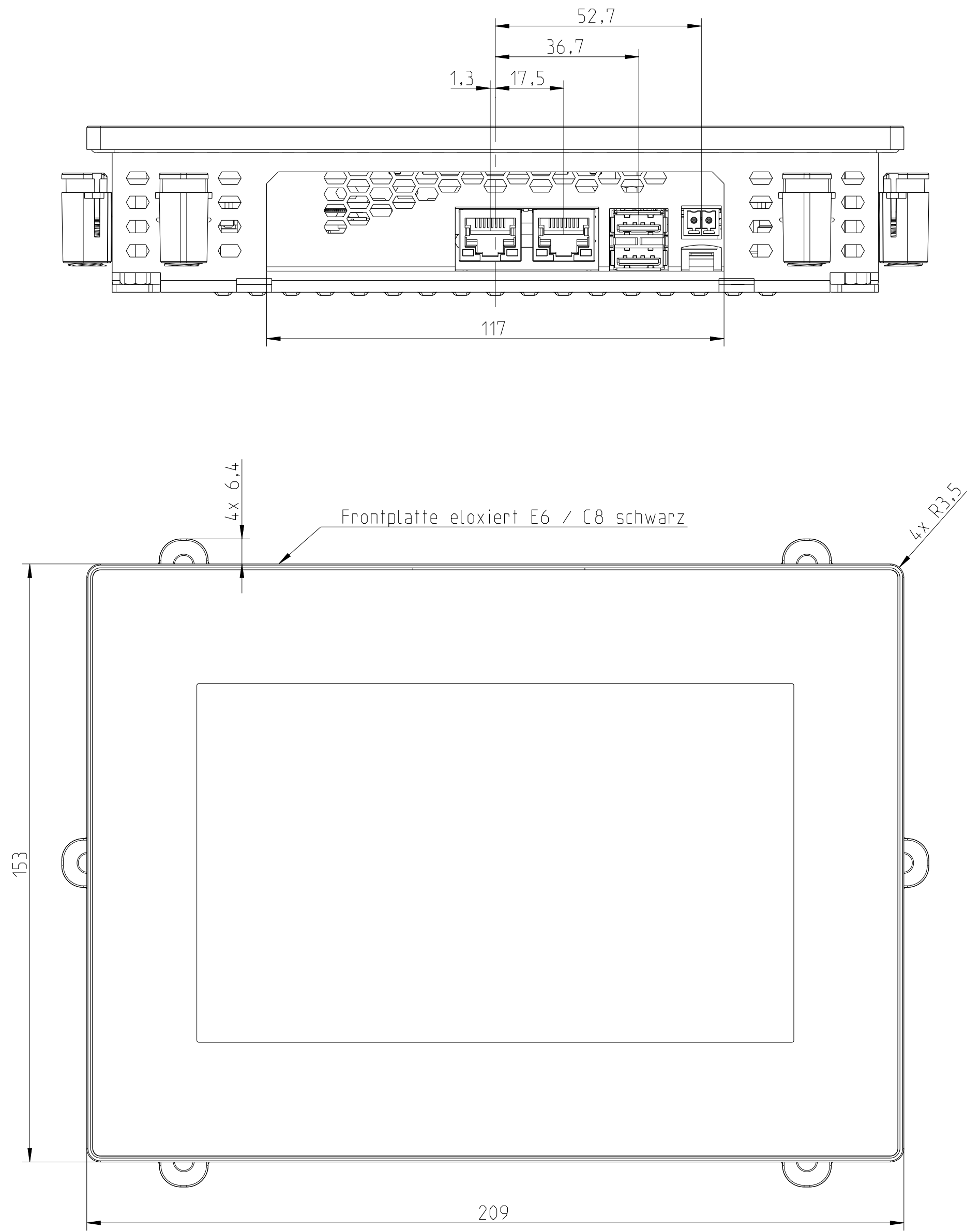


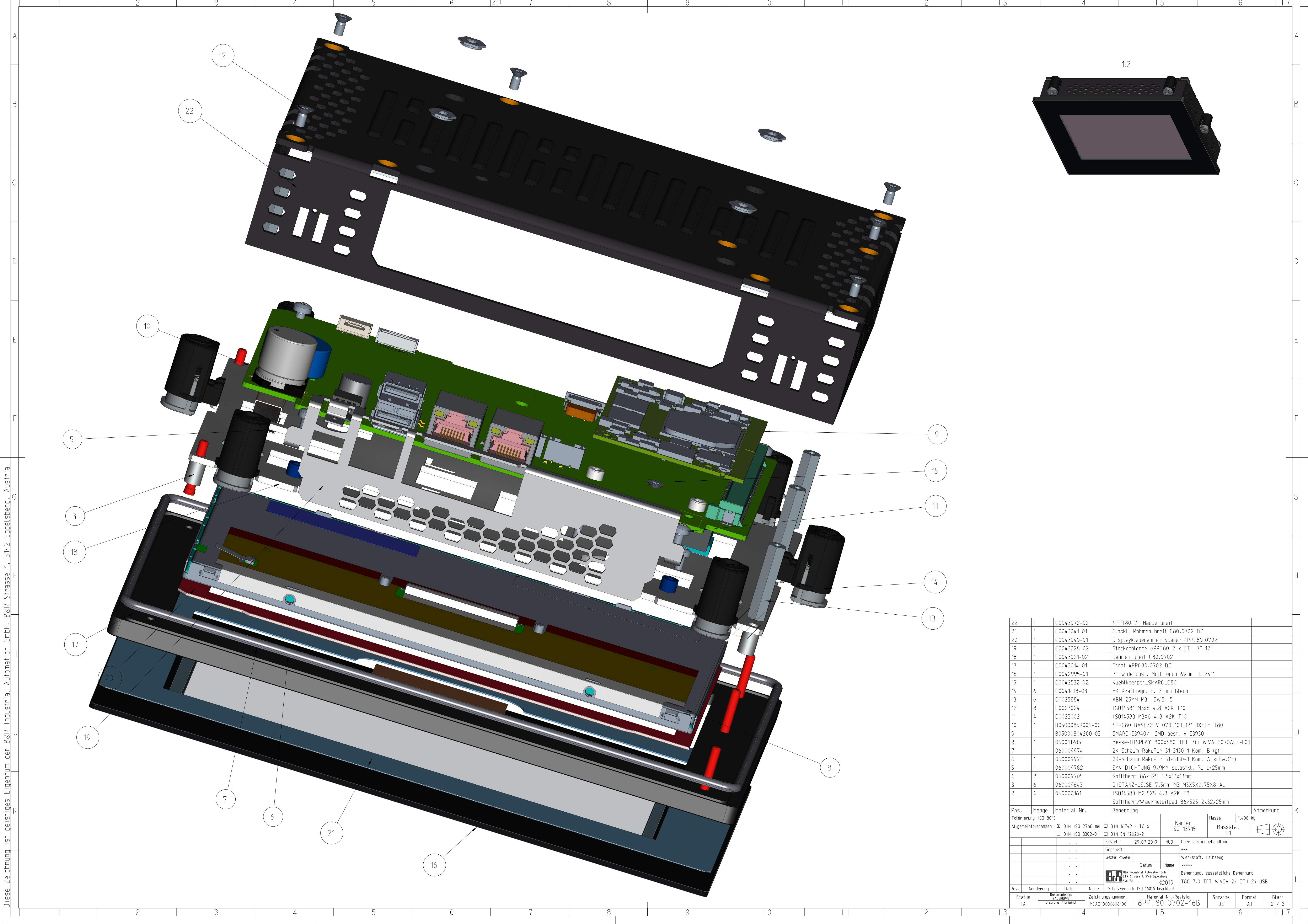
Diese Zeichnung ist geistiges Eigentum der B&R Industrial Automation GmbH, B&R Strasse 1, 5142 Eggelsberg, Austria



Einbauausschnitt: 198 ±1 x 142 ±1

Tolerierung ISO 8015					Kanten ISO 13715		Masse	- kg	
Allgemeintoleranzen							Massstab 1:1		
<input checked="" type="checkbox"/> DIN ISO 2768 mK <input type="checkbox"/> DIN 16742 - TG 6									
<input type="checkbox"/> DIN ISO 3302-01 <input type="checkbox"/> DIN EN 12020-2									
			Erstellt	29.07.2019	HUO	Oberflächenbehandlung			
			Geprüft			***			
			letzter Prüfer			Werkstoff, Halbzeug			
				Datum	Name	*****			
						Benennung, zusätzliche Benennung			
			B&R Industrial Automation GmbH B&R Strasse 1, 5142 Eggelsberg Austria			T80 7.0 TFT WVGa 2x ETH 2x USB			
			62019						
Rev.	Änderung	Datum	Name	Schutzvermerk ISO 160% beachten!					
Status	Dokumententyp BAUZEICHNUNG ursprung / Original	Zeichnungsnummer	Material Nr.	Revision	Sprache	Format	Blatt 1 / 2		
		MCAD10000608100	6PPT80.0702-16X		DE	A1			





Exploded view diagram of the B&R Industrial Automation GmbH device, showing the main assembly and various components labeled with numbers 1 through 22.

Key components and labels:

- 1: Main assembly (Front panel)
- 2: Main assembly (Back panel)
- 3: Main assembly (Internal components)
- 4: Main assembly (Internal components)
- 5: Main assembly (Internal components)
- 6: Main assembly (Internal components)
- 7: Main assembly (Internal components)
- 8: Main assembly (Internal components)
- 9: Main assembly (Internal components)
- 10: Main assembly (Internal components)
- 11: Main assembly (Internal components)
- 12: Main assembly (Internal components)
- 13: Main assembly (Internal components)
- 14: Main assembly (Internal components)
- 15: Main assembly (Internal components)
- 16: Main assembly (Internal components)
- 17: Main assembly (Internal components)
- 18: Main assembly (Internal components)
- 19: Main assembly (Internal components)
- 20: Main assembly (Internal components)
- 21: Main assembly (Internal components)
- 22: Main assembly (Internal components)

Technical specifications and assembly information:

Pos.	Menge	Material Nr.	Benennung	Anmerkung
22	1	C0043072-02	4PPT80 7" Haube breit	
21	1	C0043041-01	Glaskl. Rahmen breit C80.0702 DD	
20	1	C0043040-01	DisplayKleberahmen Spacer 4PPC80.0702	
19	1	C0043028-02	Steckerblende 6PPT80 2 x ETH 7"-12"	
18	1	C0043021-02	Rahmen breit C80.0702	
17	1	C0043014-01	Front 4PPC80.0702 DD	
16	1	C0042995-01	7" wide cust. Multitouch 69mm ILI2511	
15	1	C0042532-02	Kuehlkoerper_SMARC_C80	
14	6	C0041418-03	HK Kraftbegr. f. 2 mm Blech	
13	6	C0025884	ABM 25MM M3 SW5. 5	
12	8	C0023024	ISO14581 M3x6 4.8 A2K T10	
11	4	C0023002	ISO14583 M3x6 4.8 A2K T10	
10	1	B05000859009-02	4PPC80_BASE/2 V_070_101_121_1XETH_T80	
9	1	B05000804200-03	SMARC-E3940/1 SMD-best. V-E3930	
8	1	060011285	Messe-DISPLAY 800x480 TFT 7in WVA_G070ACE-LO1	
7	1	060009974	2K-Schaum RakuPur 31-3130-1 Kom. B (g)	
6	1	060009973	2K-Schaum RakuPur 31-3130-1 Kom. A schw.(1g)	
5	1	060009782	EMV DICHUNG 9x9MM selbskt. PU L=25mm	
4	2	060009705	Softtherm 86/325 3,5x13x13mm	
3	6	060009643	DISTANZHUELSE 7,5mm M3 M3X5X0,75X8 AL	
2	4	060000161	ISO14583 M2,5X5 4.8 A2K T8	
1	1		Softtherm/Waermeleitpad 86/525 2x32x25mm	

General tolerances: ISO 8015  
Allgemeintoleranzen: DIN ISO 2768 mK, DIN 16742 - TG 6, DIN ISO 3302-01, DIN EN 12020-2  
Kanten: ISO 13715  
Masse: 1,408 kg  
Massstab: 1:1

Assembly information:  
Erstellt: 29.07.2019  
Geprueft: HUO  
letzt. Pruefer: HUO  
Datum: HUO  
Name: HUO  
Benennung: T80 7.0 TFT WVGA 2x ETH 2x USB

Rev. 1A, Aenderung, Datum, Name, Zeichnungsnummer: MCAD10000608100, Material Nr.: 6PPT80.0702-16B, Sprache: DE, Format: A1, Blatt: 2 / 2