

8B0M0170HW00.000-1

1 General information

- Pioneering power distribution system
- Integrated distribution of power and auxiliary power supply
- Shockproof
- Option slots possible

2 Order data


| Model number | Short description | Figure |
|--------------------|--|---|
| | Wall mounting | |
| 8B0M0170HW00.000-1 | ACOPOSmulti mounting plate with backplane, 17 slots, HV, wall mounting, 75 mm ² and 22 mm ² , complete |  |
| | Optional accessories | |
| | Fan modules | |
| 8BXF002.0000-00 | ACOPOSmulti fan module, replacement fan for mounting plate with backplane module, wall mounting (8B0MxxxxHWxx.xxx-x) | |

Table 1: 8B0M0170HW00.000-1 - Order data

| Model number | Number of slots | Number of fan modules |
|--------------------|-----------------|-----------------------|
| 8B0M0170HW00.000-1 | 17 | 12 |

Table 2: Number of 8BXF002.0000-00 fan modules depending on mounting plate 8B0M

3 Technical data

| Model number | 8B0M0170HW00.000-1 |
|---|---|
| General information | |
| Number of slots | 17 |
| Cooling and mounting method | Wall mounting |
| Certifications | |
| CE | Yes |
| UL | cULus E225616 Power conversion equipment |
| DC bus connection | |
| Voltage | |
| Nominal | 750 VDC |
| Continuous power ¹⁾ | 200 kW |
| Reduction of continuous power depending on installation elevation | |
| Starting at 500 m above sea level | 20 kW per 1000 m |
| Cross section | |
| DC+, DC- | 72 mm ² |
| PE | 72 mm ² |

Table 3: 8B0M0170HW00.000-1 - Technical data

| Model number | 8B0M0170HW00.000-1 |
|---|---|
| 24 VDC auxiliary supply | |
| Voltage | 25 VDC $\pm 1.6\%$ |
| Continuous power ¹⁾ | 1500 W |
| Max. power consumption per slot ($P_{Fan8B0M...}$) | 8.25 W ²⁾ |
| Reduction of continuous power depending on installation elevation | |
| Starting at 500 m above sea level | 150 W per 1000 m |
| Cross section | |
| 24 VDC, COM | 21.3 mm ² |
| Operating conditions | |
| Permissible mounting orientations | |
| Hanging vertically | Yes |
| Lying horizontally | Yes |
| Standing horizontally | No |
| Installation at elevations above sea level | |
| Nominal | 0 to 500 m |
| Maximum ³⁾ | 4000 m |
| Pollution degree per EN 61800-5-1 | 2 (non-conductive pollution) |
| Overvoltage category per EN 61800-5-1 | III |
| Evenness of mounting surface | Evenness of 1 mm over the entire mounting surface |
| Degree of protection per EN 60529 | IP20 |
| Environmental conditions | |
| Temperature | |
| Operation | |
| Nominal | 5 to 40°C |
| Maximum ⁴⁾ | 55°C |
| Storage | -25 to 55°C |
| Transport | -25 to 70°C |
| Relative humidity | |
| Operation | 5 to 85% |
| Storage | 5 to 95% |
| Transport | Max. 95% at 40°C |
| Mechanical characteristics | |
| Dimensions ⁵⁾ | |
| Width | 909.5 mm |
| Height | 385 mm |
| Depth | 13.5 mm |
| Weight | 9 kg |

Table 3: 8B0M0170HW00.000-1 - Technical data

- 1) Valid for the following conditions: 40°C ambient temperature, installation elevation <500 m above sea level.
- 2) Corresponds to the proportional power consumption of the fan modules in the mounting plate.
- 3) Continuous operation of ACOPOSmulti mounting plates at an installation elevation of 500 m to 4000 m above sea level is possible taking the specified reduction in continuous power into account. Requirements that go beyond this must be arranged with B&R.
- 4) Continuous operation of ACOPOSmulti mounting plates at ambient temperatures ranging from 40°C to max. 55°C is possible (taking the specified continuous power reductions into consideration).
- 5) The dimensions define the size of the mounting plate. Make sure to leave additional space above and below the backplanes for mounting, connections and air circulation.

4 Status LED

Information:

The fan modules on the underside of 8B0M mounting plates are equipped with a status LED.

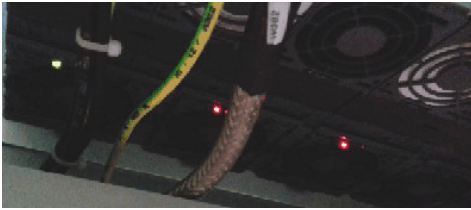


Figure 1: Fan LED 8BXF002.0000-00

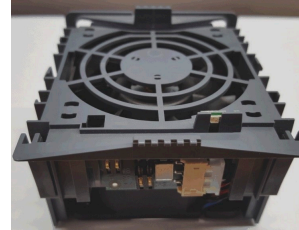


Figure 2: Fan module 8BVF002.0000-00

| Label | Color | Function | Description |
|------------|-----------|-------------|---|
| Fan module | Green/Red | Ready/Error | LED off |
| | | | LED lit red |
| | | | LED lit green |
| | | | Fan module not supplied with 24 VDC |
| | | | Fan module supplied with 24 VDC, fan in fan module not rotating |
| | | | Fan module supplied with 24 VDC, fan in fan module rotating |

Table 4: LED status indicator 8BXF002.0000-00

Information:

The ACOPOSmulti drive system has no way of detecting whether the fans in the fan modules of the mounting plate or the module-internal fans are actually rotating.

5 Dimension diagram and installation dimensions

Information:

nnnn indicates the number of slots (0160 equals 16 slots).

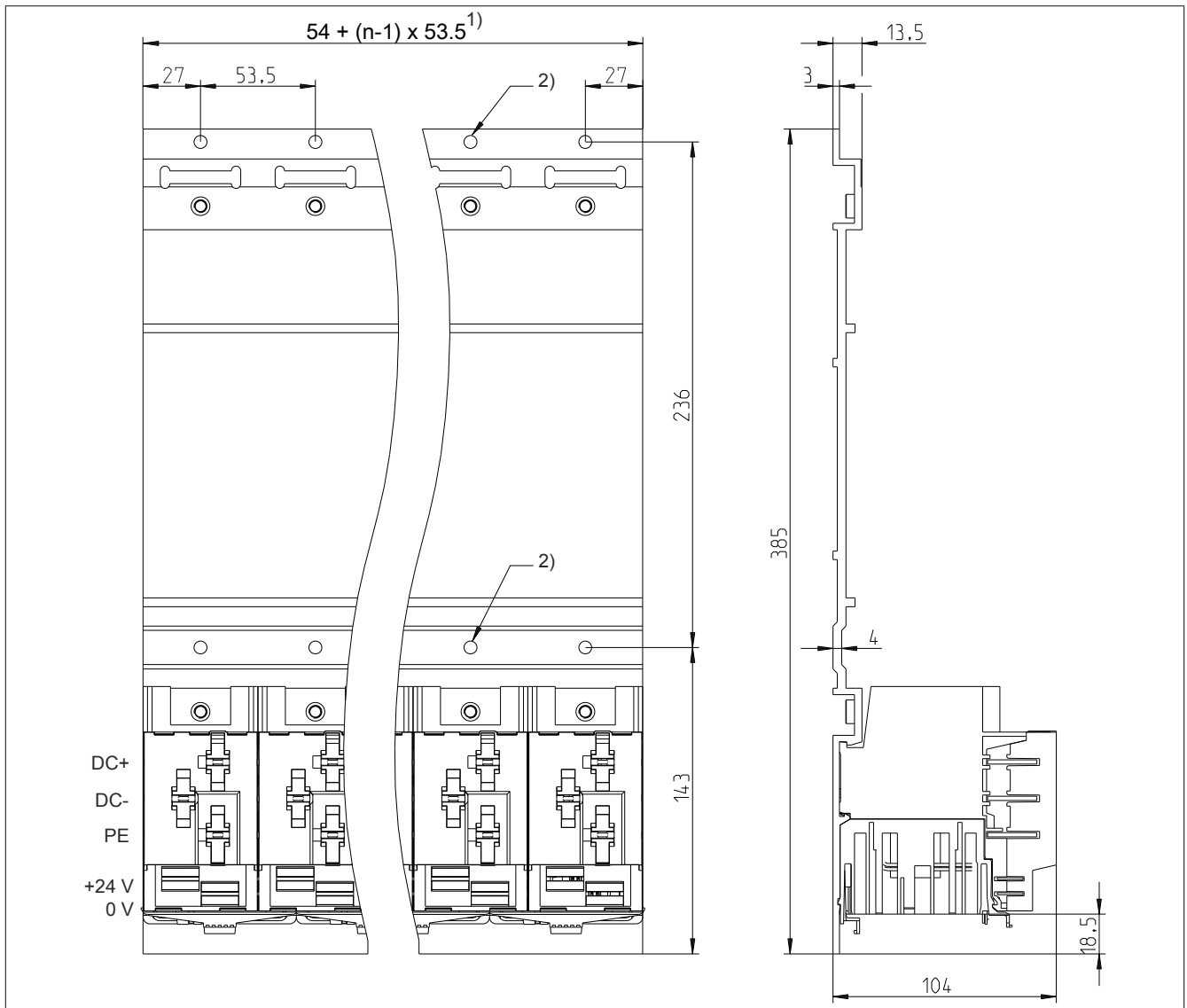


Figure 3: Dimension diagram and installation dimensions

- 1) n... Number of width units on the mounting plate
- 2) 2x n mounting holes \varnothing 6 mm
The heads of the fastening screws are not permitted to exceed a height of 6 mm.