

# 5ACCFL00.0100-000

## 1 General information

### Information:

**This document is not intended for end customers! The safety guidelines required for end customers must be incorporated into the operating instructions for end customers in the respective national language by the machine manufacturer or system provider.**

The swivel-tilt flange is installed on the mounting unit and designed for swing arm systems with 48 mm shaft diameter. The range of rotation is from  $-150^{\circ}$  to  $+150^{\circ}$ ; the tilting range is up to a maximum of  $15^{\circ}$ .

- Swivel-tilt flange
- Range of rotation  $\pm 150^{\circ}$
- Tilting range  $\pm 15^{\circ}$
- Stepless adjustment of the range of rotation and tilting range
- For swing arm systems with 48 mm shaft diameter
- Tightening torque for tilt flange locking lever: Max. 7 Nm
- Tightening torque rotary flange locking lever: 5 Nm
- Tightening torque for locking screw (M6) opposite the clamping lever: Max. 3 Nm

### Caution!

**After adjusting the rotation and/or tilt angle, the corresponding locking lever must be fixed in position (see above for the maximum tightening torques).**

**The screw in the locking lever is not permitted to be tightened. Fixing must be carried out exclusively with the locking lever.**

### Warning!

**The swivel-tilt flange is generally compatible with all panel sizes.**

**Use in conjunction with panels in portrait format is not recommended since the range of rotation and tilt cannot be fully utilized.**

## 3 Order data


Model number	Short description	Figure
5ACCFL00.0100-000	<b>Flange</b> AP5000 flange - Swivel-tilt flange for swing arm - For swing arm mounting unit	

Table 1: 5ACCFL00.0100-000 - Order data

## 4 Technical data

### Information:

The following specified characteristic data, features and limit values are only valid for these individual components and may differ from those of the complete system. The data specified for the complete system applies to the complete system in which this individual component is used, for example.

<b>Model number</b>	<b>5ACCFL00.0100-000</b>
<b>General information</b>	
Certifications	
CE	Yes
UL	cULus E115267 Industrial control equipment
<b>Mechanical properties</b>	
Material	Anodized aluminum E6/C0
Dimensions	
Height	147 mm
Diameter	90 mm
Weight	1666 g

Table 2: 5ACCFL00.0100-000 - Technical data

### Danger!

#### +24 VDC power supply

The swivel-tilt flange is only permitted to be used in conjunction with devices supplied with a SELV/ PELV power supply or with safety extra-low voltage (SELV) per EN 60950.

## 5 Dimensions

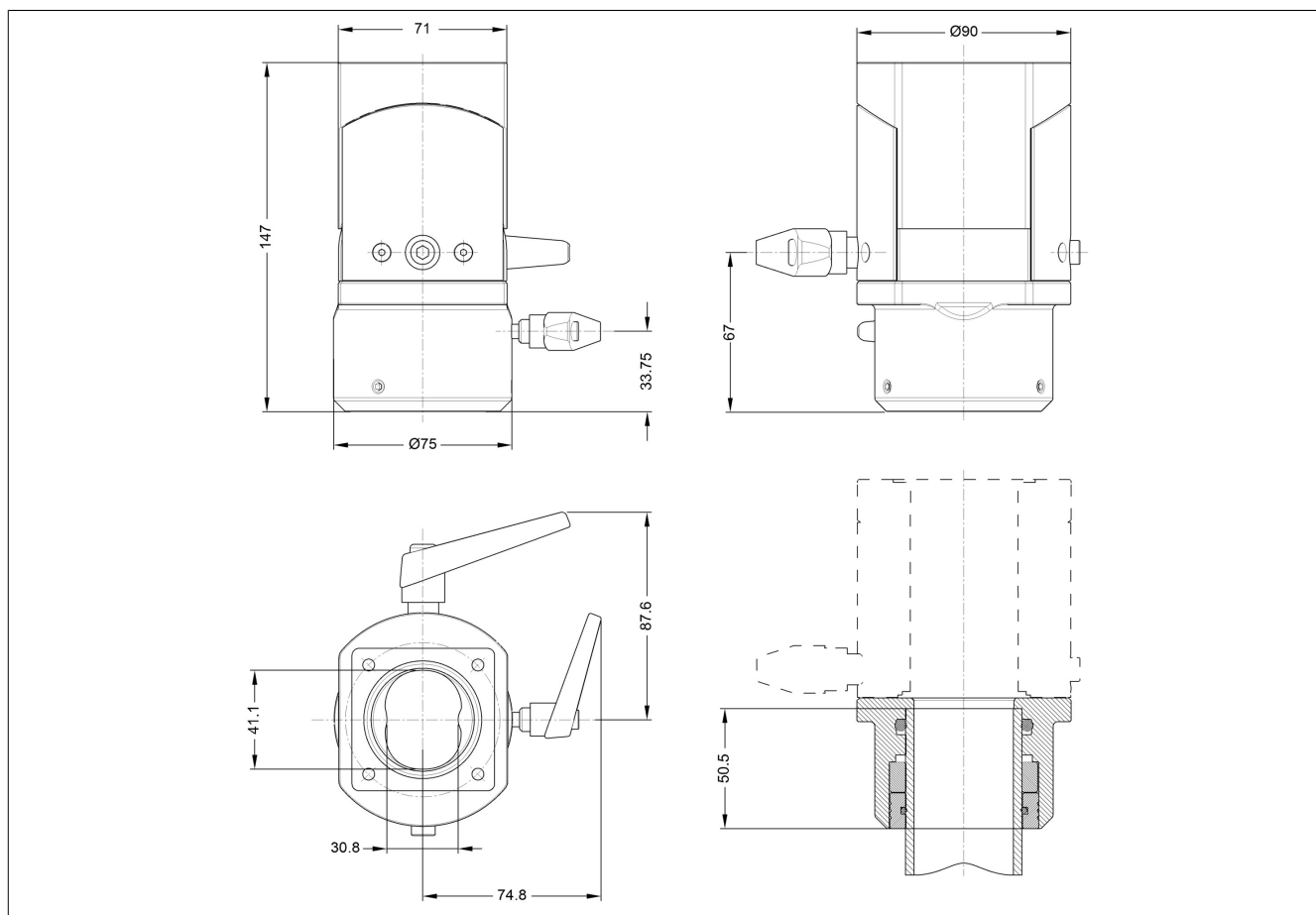


Figure 1: 5ACCFL00.0100-000 - Dimensions